

Appendix L - Areas where improvements to flood defences may be required

To assist Swale Borough Council in prioritising and targeting management of tidal flood defences, the Level 1 screening sites in relation to the **Medway Estuary and Swale Strategy** (MEASS), were examined further.

The screening sites were intersected by the Environment Agency's North Kent Coast 0.5% AEP tidal extents to identify the sites at risk of tidal flooding. This then highlighted the areas along the coast where the existing flood defences may require improvements.

This Appendices contains mapping showing the screening sites within the 0.5% AEP tidal extents. The modelled exceedance of flood defences near the sites are also included in the mapping to help identify locations where defences may need improvements, with the exceedance data obtained from the North Kent Coast 2019 modelling study.

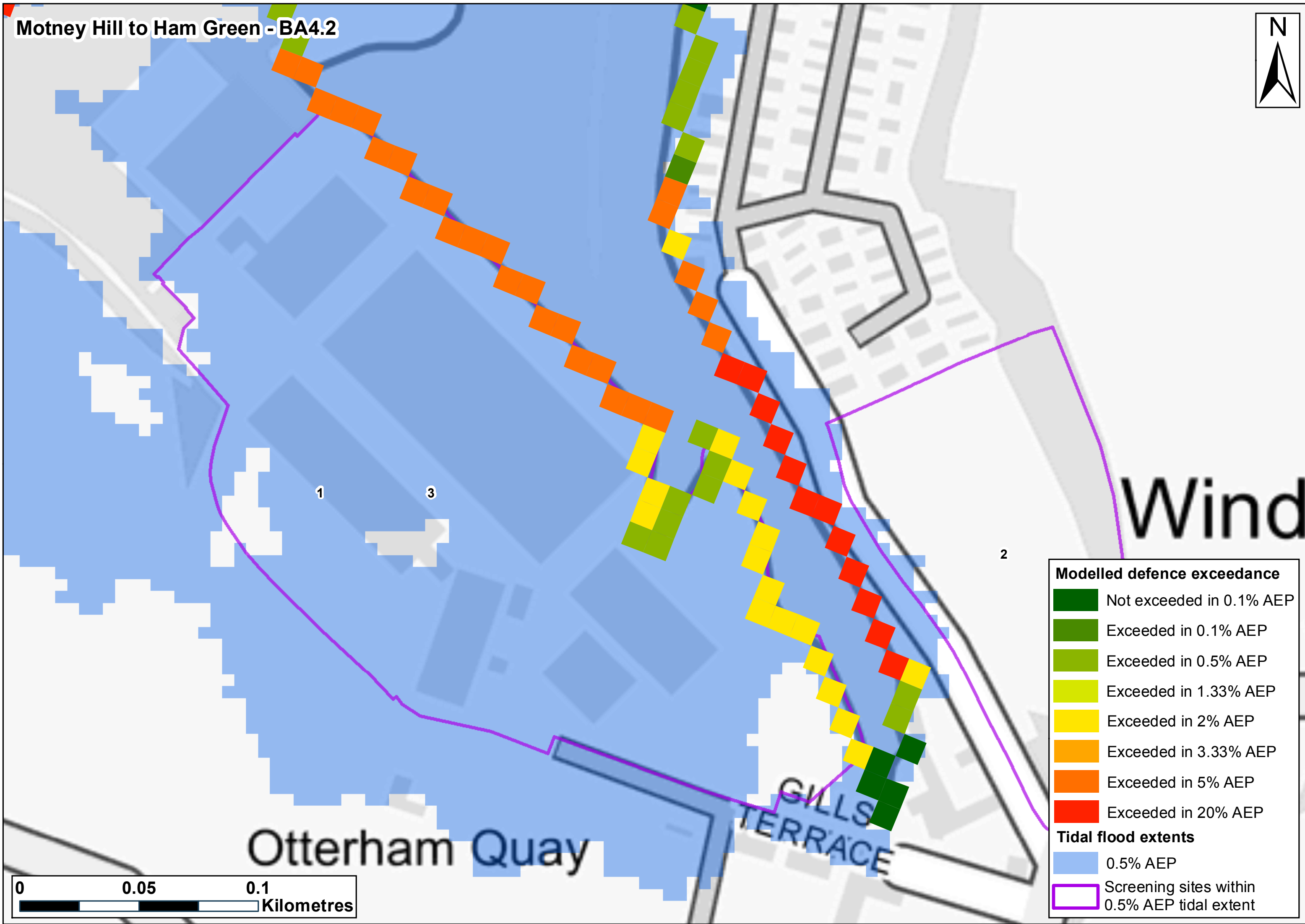
The screening sites in the mapping are grouped by the MEASS 'Benefit Area' they are located within. This Appendices also contains a table listing the screening sites intersecting the 0.5% AEP tidal extent and summarising the MEASS options planned for defences in each 'Benefit Area'. This then highlights the Environment Agency's plans for the defences along the coastline which protect those sites.

It should be noted that the MEASS implementation plans for the Motney Hill to Ham Green (BA4.2) and Raspberry Hill (Ba4.6) MEASS Benefit Areas are 'No Active Intervention'. Maintenance of the defences in these areas will be dependent on third party funding. This means that potential development sites in these areas which are currently defended may not be in the future and plans should be made accordingly.

Further information on the Environment Agency's plans for defences within Swale Borough are available in the MEASS.

MEASS Benefit Area	Sites screened within the extent of the 0.5% AEP tidal event			MEASS Implementation Plan Options
	Label Numbers	Site Names / Locations	Source	
Motney Hill to Ham Green - BA4.2	1 2 3	Otterham Quay Land at Otterham Quay Lane Otterham Quay, Otterham Quay Lane	Employment Land Review Sites SHLAA Sites SHLAA Sites	No Active Intervention – defence maintenance will cease
Raspberry Hill - BA4.6	4 5	Former Funton Brickworks Former Funton Brickworks	Employment Land Review Sites SHLAA Sites	No Active Intervention
Milton Creek - BA5.1	6 7	Ridham Dock Ridham Dock and Kemsley Fields	Employment Land Review Sites Employment Land Review Sites	Raise defences after initially maintaining at current standard of protection
Sittingbourne - BA5.2	8 9 10 11 12 13 14 15 16 17 18 19	North West Sittingbourne Sittingbourne Town Centre Milton Pipes, Cooks Lane Site Crown Quay Lane Land at Millen Road Land at Gas Road / Prentis Quay Trinity Trading Estate East of Crown Quay Lane Eurolink Phases 1 – 4 Milton Pipes (East) Land North of Quinton Road (See WE/022) Crown Quay Lane	Adopted Mixed Use Allocations Adopted Regeneration Areas Adopted Housing Allocations Adopted Housing Allocations Employment Land Review Sites Employment Land Review Sites Employment Land Review Sites Employment Land Review Sites Employment Land Review Sites SHLAA Sites SHLAA Sites	Construct new setback embankments at Kemsley and raise defences along the rest of the section
Ham Marshes - BA7.1	20 21 22 23	The Oare gravel workings, Oare Road, Faversham Oare Road Industrial Estate John Hal Close Industrial Estate Oare Gravel Works	Adopted Mixed Use Allocations Employment Land Review Sites Employment Land Review Sites Employment Land Review Sites	Maintain defences for the first epoch after which the policy will change to No Active Intervention with freshwater compensation
Faversham - BA7.2	24 25 26 27 28 29 30 31 32 33 34 35 36 37	Faversham Brewery Former Frank and Whitome Site (Site A) Former Frank and Whitome Site (Site B) Standard House and Iron Wharf Creek Basin and BMM Weston Flood Lane, Faversham Provender Mil, New Creek Road Opposite 1, New Creek Road Adj Quayside House, Standard Quay Standard House, New Creek Road Swan Quay, Belvedere Road Land East of Abbey Farm Land at Brent Road Old Green Sheds, Standard Quay	Employment Land Review Sites Employment Land Review Sites Employment Land Review Sites Employment Land Review Sites Employment Land Review Sites SHLAA Sites SHLAA Sites SHLAA Sites SHLAA Sites SHLAA Sites SHLAA Sites SHLAA Sites SHLAA Sites SHLAA Sites	Raise defences to improve the current standard of protection
Rushenden Marshes - BA8.5	38	Land at The Port of Sheerness, Rushenden Road	SHLAA Sites	Defences will be raised in the south and east of the Benefit Area to provide protection to BA11.2. Elsewhere there will be a policy of No Active Intervention.
Queenborough - BA11.2	39 40 41 42 43 44 45	Queenborough and Rushenden Aesica Plant Queenborough Shipyard Klondyke Industrial Estate West Street, Queenborough South of Queenborough Creek West of Rushenden Road	Adopted Regeneration Areas Employment Land Review Sites Employment Land Review Sites Employment Land Review Sites SHLAA Sites SHLAA Sites SHLAA Sites	Raise defences to improve the current standard of protection
Sheerness - BA11.2	46 47	Port of Sheerness Port of Sheerness	Adopted Regeneration Areas Employment Land Review Sites	Raise defences to improve the current standard of protection

Motney Hill to Ham Green - BA4.2



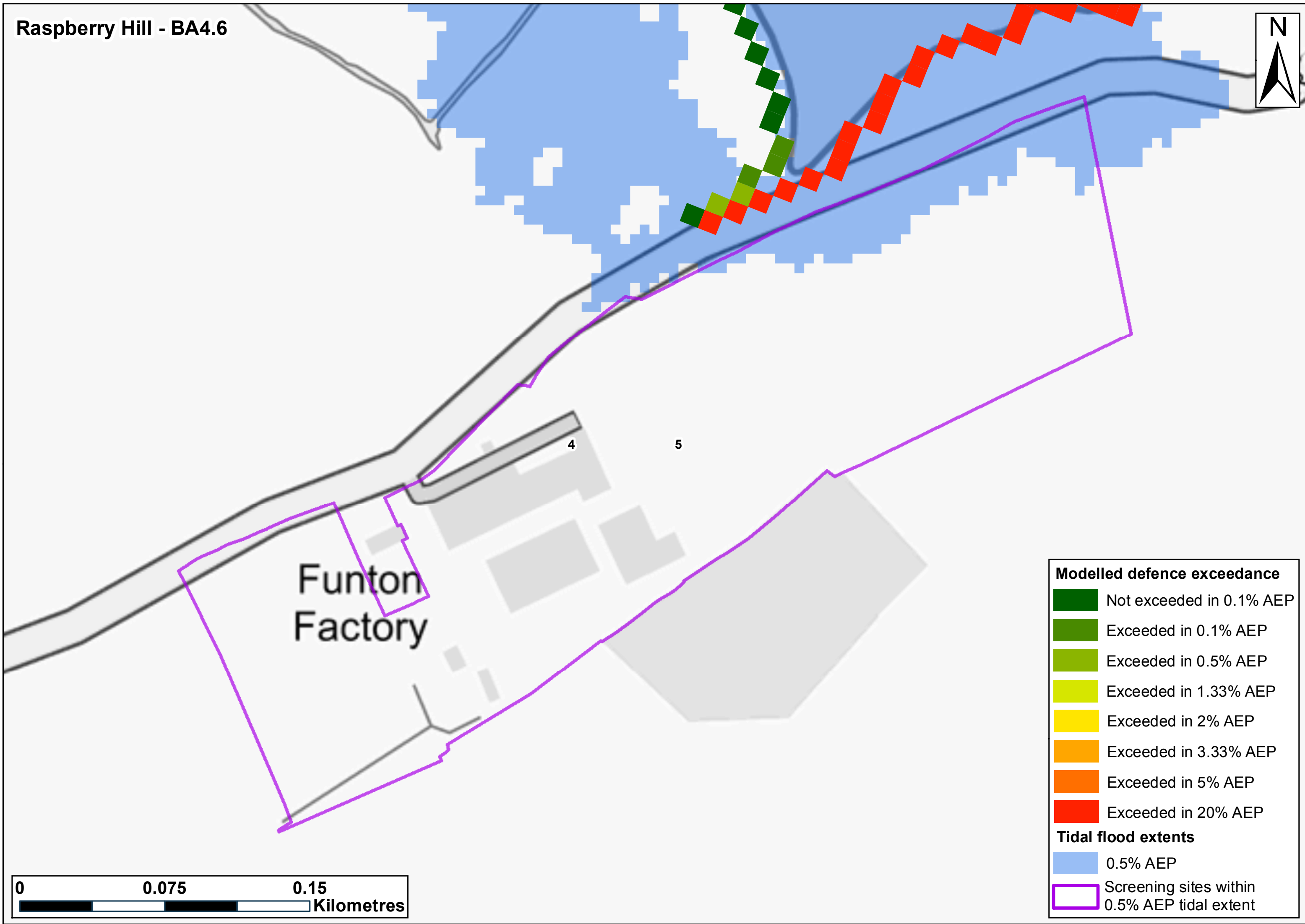
Modelled defence exceedance

- Not exceeded in 0.1% AEP
- Exceeded in 0.1% AEP
- Exceeded in 0.5% AEP
- Exceeded in 1.33% AEP
- Exceeded in 2% AEP
- Exceeded in 3.33% AEP
- Exceeded in 5% AEP
- Exceeded in 20% AEP

Tidal flood extents

- 0.5% AEP
- Screening sites within 0.5% AEP tidal extent





Modelled defence exceedance

- Not exceeded in 0.1% AEP
- Exceeded in 0.1% AEP
- Exceeded in 0.5% AEP
- Exceeded in 1.33% AEP
- Exceeded in 2% AEP
- Exceeded in 3.33% AEP
- Exceeded in 5% AEP
- Exceeded in 20% AEP

Tidal flood extents

- 0.5% AEP
- Screening sites within 0.5% AEP tidal extent

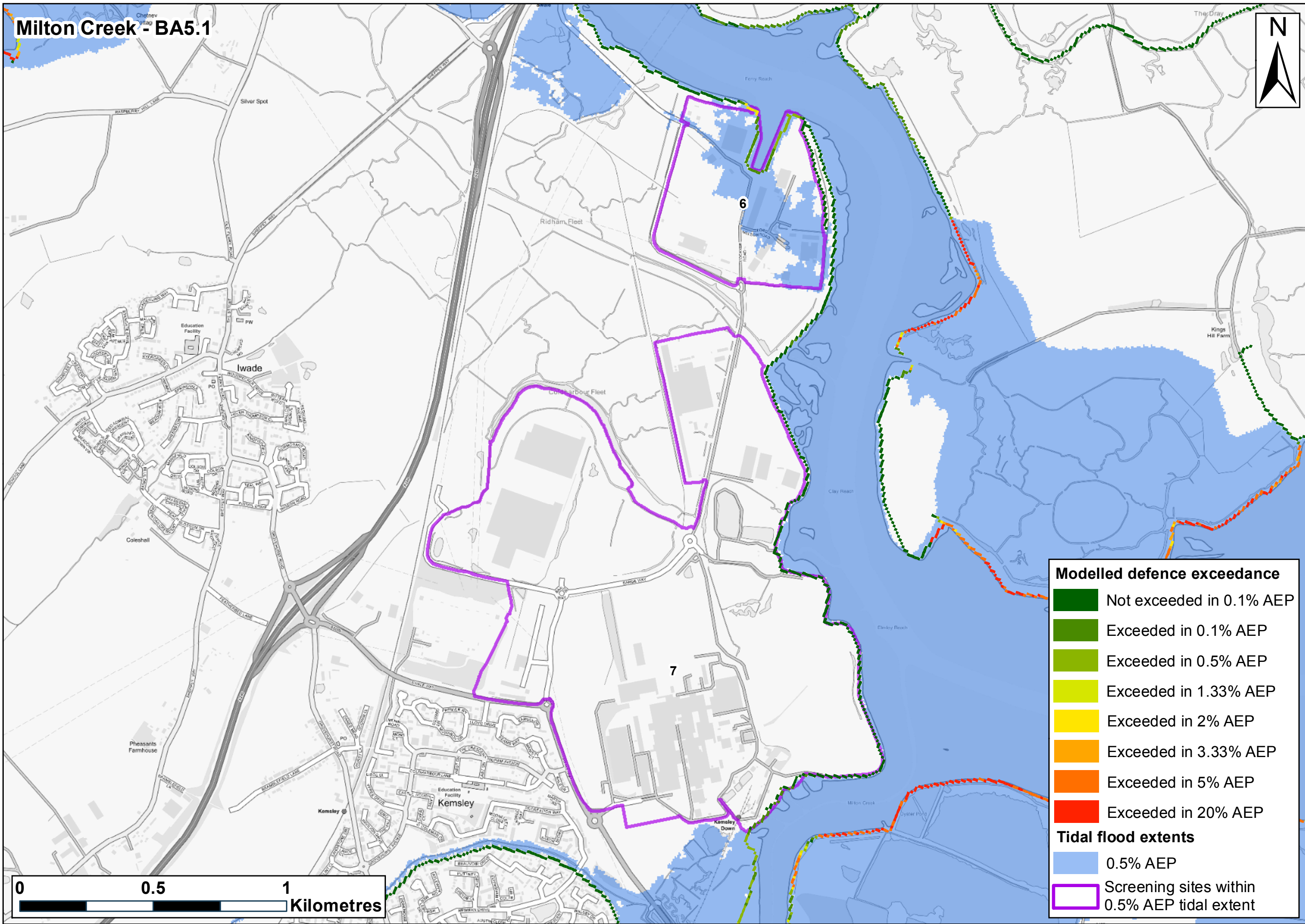


Funton
Factory

4

5

Milton Creek - BA5.1



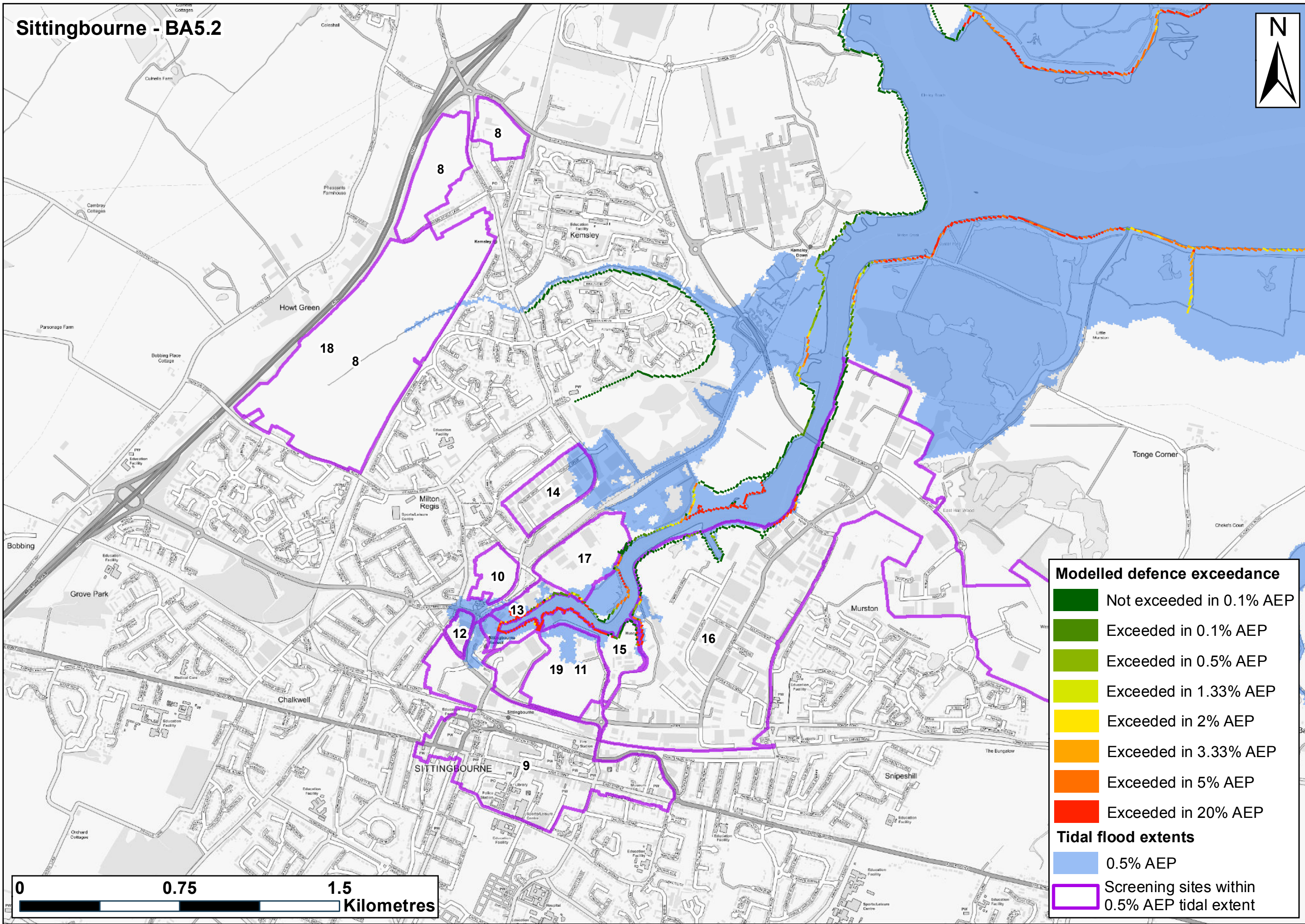
Modelled defence exceedance

- Not exceeded in 0.1% AEP
- Exceeded in 0.1% AEP
- Exceeded in 0.5% AEP
- Exceeded in 1.33% AEP
- Exceeded in 2% AEP
- Exceeded in 3.33% AEP
- Exceeded in 5% AEP
- Exceeded in 20% AEP

Tidal flood extents

- 0.5% AEP
- Screening sites within 0.5% AEP tidal extent

Sittingbourne - BA5.2



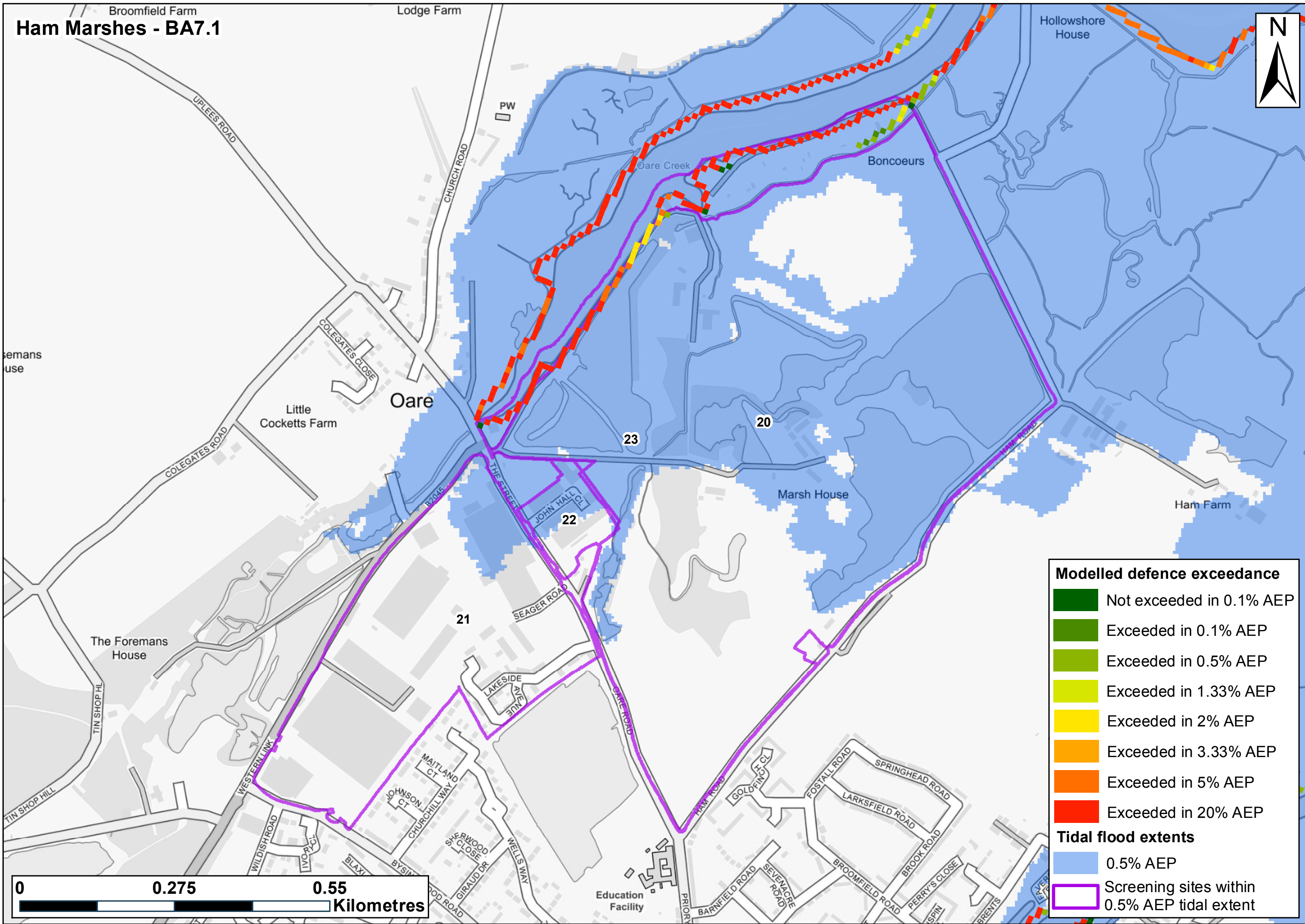
Modelled defence exceedance

- Not exceeded in 0.1% AEP
- Exceeded in 0.1% AEP
- Exceeded in 0.5% AEP
- Exceeded in 1.33% AEP
- Exceeded in 2% AEP
- Exceeded in 3.33% AEP
- Exceeded in 5% AEP
- Exceeded in 20% AEP

Tidal flood extents

- 0.5% AEP
- Screening sites within 0.5% AEP tidal extent

Ham Marshes - BA7.1

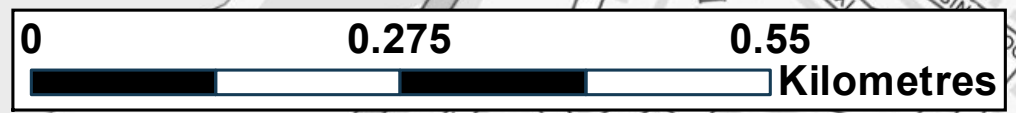


Modelled defence exceedance

- Not exceeded in 0.1% AEP
- Exceeded in 0.1% AEP
- Exceeded in 0.5% AEP
- Exceeded in 1.33% AEP
- Exceeded in 2% AEP
- Exceeded in 3.33% AEP
- Exceeded in 5% AEP
- Exceeded in 20% AEP

Tidal flood extents

- 0.5% AEP
- Screening sites within 0.5% AEP tidal extent



Broomfield Farm
Lodge Farm
Hollowshore House
PW
Oare Creek
Boncoeurs
Oare
Little Cocketts Farm
Marsh House
Ham Farm
The Foremans House
Education Facility

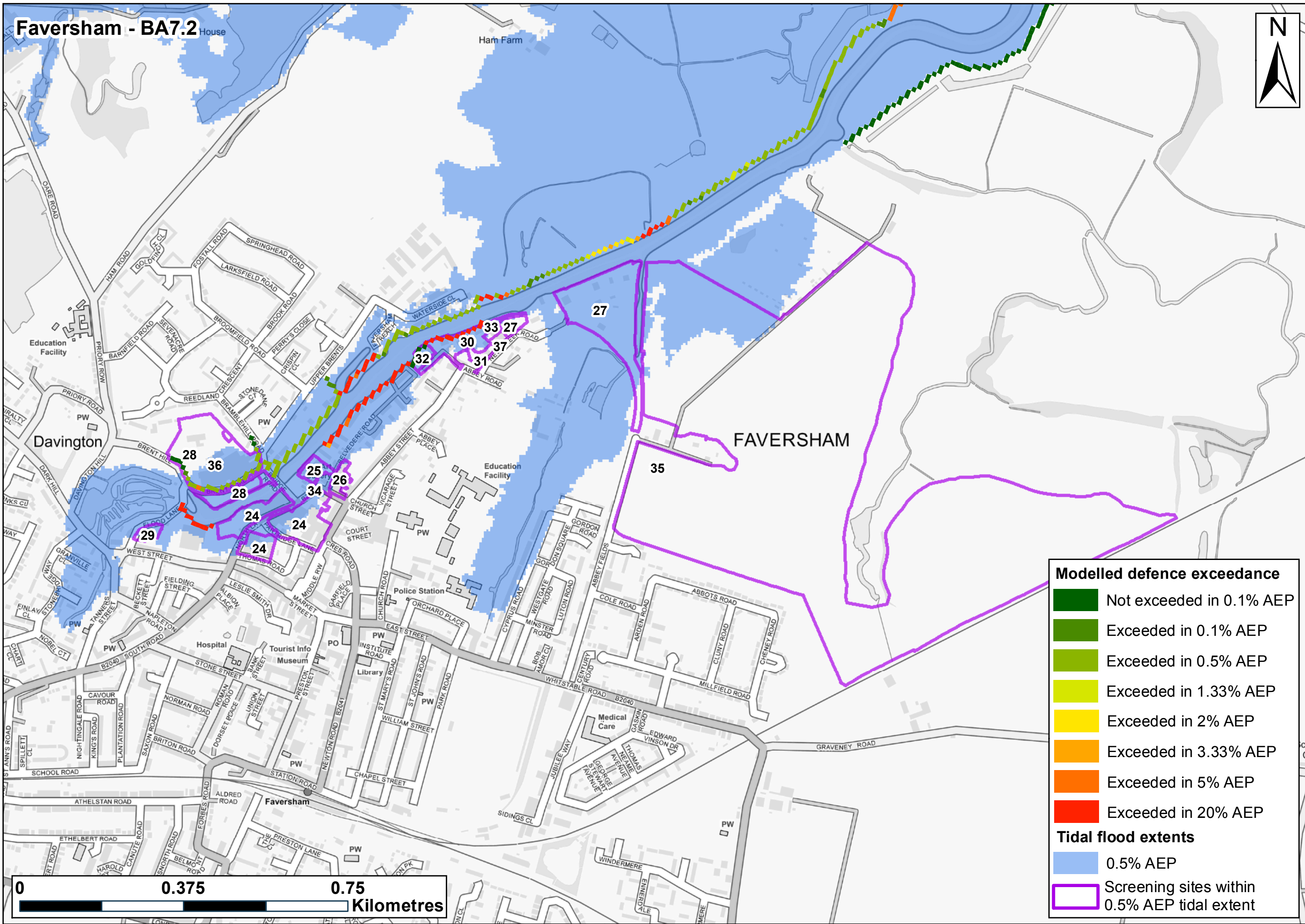
UPLEES ROAD
CHURCH ROAD
COLEGATES ROAD
COLEGATES CLOSE
THE STREET
SEAGER ROAD
OARE ROAD
HAM ROAD
WILDISH ROAD
WELLS WAY
MAITLAND CT
JOHNSON CT
CHURCHILL WAY
SHERWOOD ST CLOSE
GRAUD DR
WELLS WAY
BARNFIELD ROAD
SEVENACRE ROAD
FOSTALL ROAD
LARKSFIELD ROAD
BROOMFIELD ROAD
BROOK ROAD
PERRY'S CLOSE
SPIN
BRENTS

20
21
22
23









TIN SHOP HILL
TIN SHOP HILL
WESTERN LINK
IVOR CT
BLAX
BYSIN

LAKESIDE AVENUE
GOLDFINCH



JOHN HALL CT



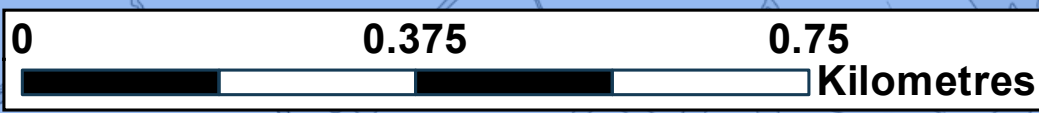
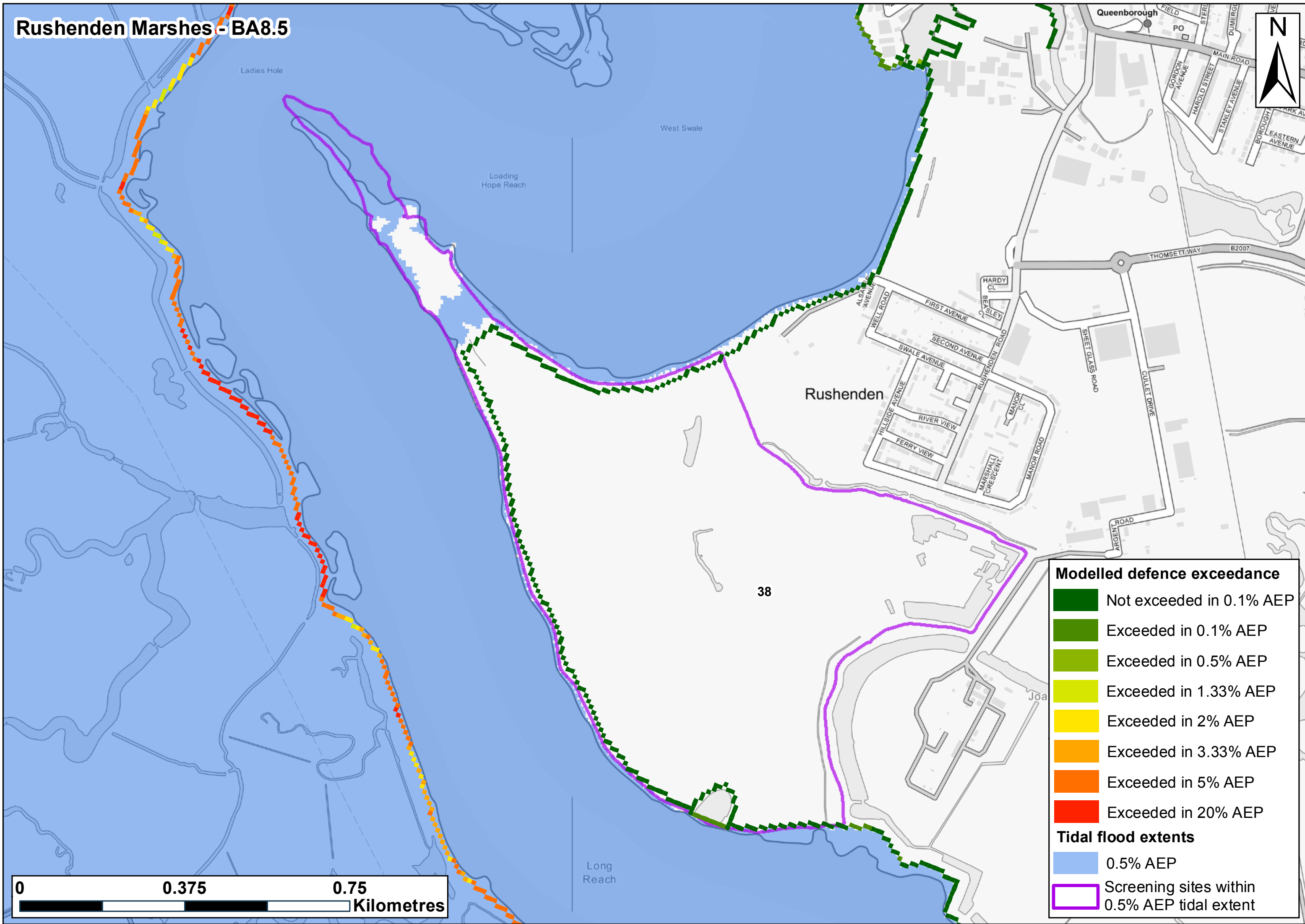
Modelled defence exceedance

-  Not exceeded in 0.1% AEP
-  Exceeded in 0.1% AEP
-  Exceeded in 0.5% AEP
-  Exceeded in 1.33% AEP
-  Exceeded in 2% AEP
-  Exceeded in 3.33% AEP
-  Exceeded in 5% AEP
-  Exceeded in 20% AEP

Tidal flood extents

-  0.5% AEP
-  Screening sites within 0.5% AEP tidal extent

Rushenden Marshes - BA8.5



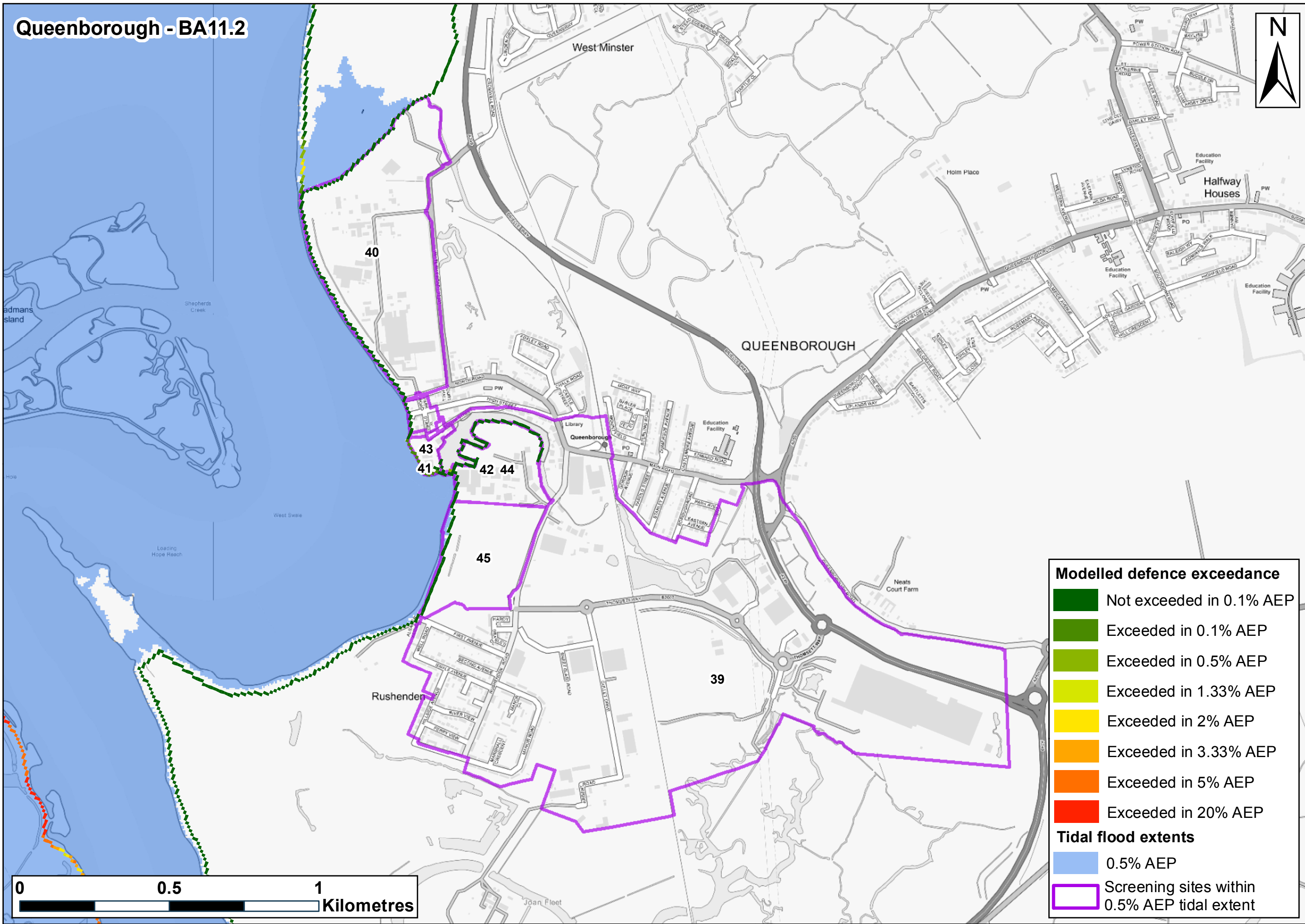
Modelled defence exceedance

- Not exceeded in 0.1% AEP
- Exceeded in 0.1% AEP
- Exceeded in 0.5% AEP
- Exceeded in 1.33% AEP
- Exceeded in 2% AEP
- Exceeded in 3.33% AEP
- Exceeded in 5% AEP
- Exceeded in 20% AEP

Tidal flood extents

- 0.5% AEP
- Screening sites within 0.5% AEP tidal extent

Queenborough - BA11.2



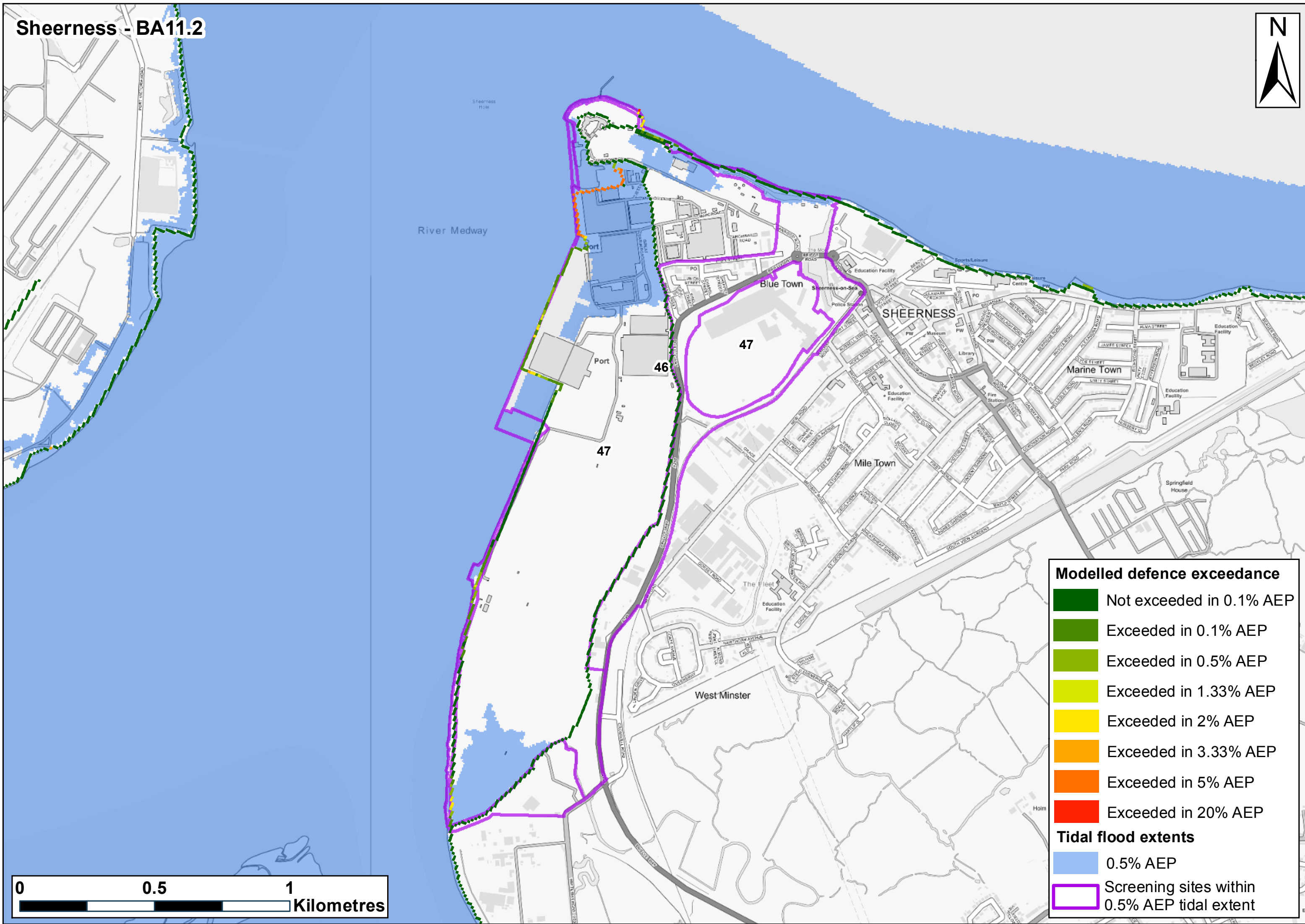
Modelled defence exceedance

- Not exceeded in 0.1% AEP
- Exceeded in 0.1% AEP
- Exceeded in 0.5% AEP
- Exceeded in 1.33% AEP
- Exceeded in 2% AEP
- Exceeded in 3.33% AEP
- Exceeded in 5% AEP
- Exceeded in 20% AEP

Tidal flood extents

- 0.5% AEP
- Screening sites within 0.5% AEP tidal extent

Sheerness - BA11.2



Modelled defence exceedance

- Not exceeded in 0.1% AEP
- Exceeded in 0.1% AEP
- Exceeded in 0.5% AEP
- Exceeded in 1.33% AEP
- Exceeded in 2% AEP
- Exceeded in 3.33% AEP
- Exceeded in 5% AEP
- Exceeded in 20% AEP

Tidal flood extents

- 0.5% AEP
- Screening sites within 0.5% AEP tidal extent

